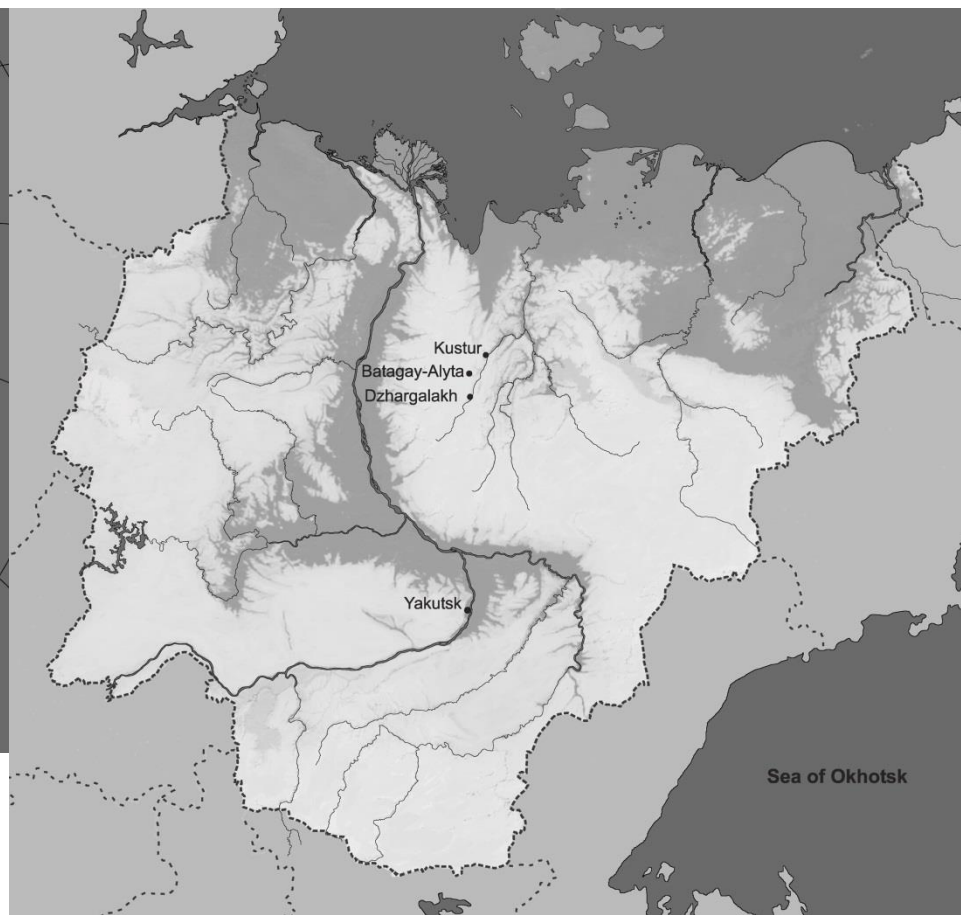
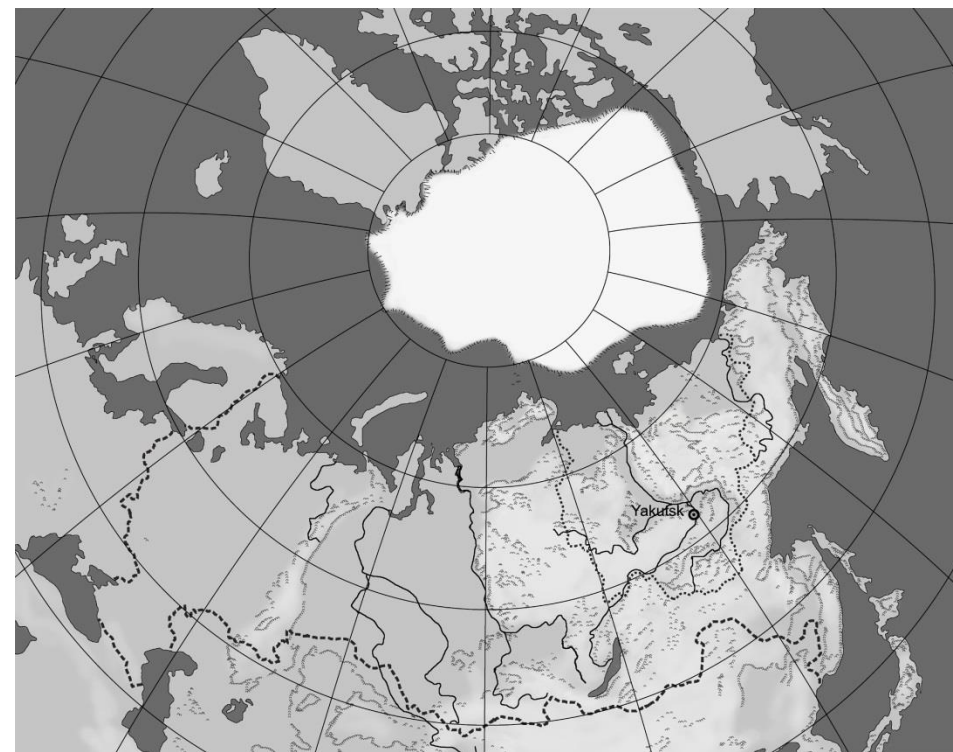


# Field work in Eastern Siberia – Sampling of reindeer in Yakutia for the CLINF-project

Presented by  
**Juha Kantanen**

Natural Resources Institute Finland  
juha.kantanen@luke.fi

# Sakha Republic (Yakutia)



# Previous collaboration

- MacNeil M.D., Alexander L. J., Kantanen J., Ammosov I.A., Ivanova Z.I., Popov R.G., Ozerov M., Millbrooke A., Cronin M.A. 2017. Potential emigration of Siberian cattle germplasm to Chirikof Island, Alaska. *Journal of Genetics* 96: 47-51.
- Iso-Touru T., Tapio M., Vilkki J., Kiseleva T., Ammosov I., Ivanova Z., Popov R., Ozerov M., Kantanen J. 2016. Genetic diversity and genomic signatures of selection among cattle breeds from Siberia, Eastern and Northern Europe. *Animal Genetics* 46(6): 647-657.
- Libradoa P., Der Sarkissiana C., Erminia L., Schubert M., Jónsson H., Albrechtsen A., Fumagalli M., Yang M.A., Gamba C., Seguin-Orlando A., Mortensen C.D., Petersen B., Hoover C.A., Lorente-Galdos B., Nedoluzhko A., Boulygina E., Tsygankova S., Neuditschko M., Jagannathan V., Thèves C., Alfathan A.H., Alquraishi S.A., Al-Rasheid K.A.S., Sicheritz-Ponten T., Popov R., Grigoriev S., Alekseev A.N., Rubin E.M., McCue M., Rieder S., Leeb T., Tikhonov A., Crubézy E., Slatkin M., Marques-Bonet T., Nielsen R., Willerslev E., Kantanen J., Prokhortchouk E., Orlando L. Tracking the origins of Yakutian horses and the genetic basis for their fast adaptation to subarctic environments. *Proceedings of the National Academy of Sciences of the United States of America* 112 (50): E6889-E6897.
- Decker J.E., Taylor J.F., Kantanen J., Millbrooke A., Schnabel R.D., Alexander L.J., MacNeil M.D. 2016. Origins of cattle on Chirikof Island, Alaska, elucidated from genome-wide SNP genotypes. *Heredity* 116 (6): 502-505.
- Lenstra J.A., Ajmone-Marsan P., Beja-Pereira A., Bollongino R., Bradley D.G., Colli L., De Gaetano A., Edwards C.J., Felius M., Ferretti L., Ginja C., Hristov P., Kantanen J., Lirón J.P., Magee D.A., Negrini R., Radoslavov G.A. 2014. Meta-analysis of mitochondrial DNA reveals several population bottlenecks during worldwide migrations of cattle. *Diversity* 6(1): 178-187.
- Li M.-H., Osva A., Kantanen J. 2012. Supporting conservation of livestock biodiversity through multidisciplinary studies: a case study of the Yakutian cattle in Siberia, the far east of Russia. *Animal Genetic Resources* 50: 97-104.
- Soini K., Ovaska U., Kantanen J. 2012. Spaces of conservation of local breeds: the case of Yakutian cattle. *Sociologia Ruralis* 52: 170-191.
- Edwards C.J., Ginja G., Kantanen J., Pérez-Pardal L., Tresset A., Stock F., European Cattle Genetic Diversity Consortium, Gama L.T., M. Penedo C.T., Bradley D.G., Lenstra J.A., Nijman I.J. 2011. Dual Origins of Dairy Cattle Farming - Evidence from a Comprehensive Survey of European Y-Chromosomal Variation. *PLoS ONE* 6(1): e15922.
- Li M.-H., Kantanen J. 2010. Genetic structure of Eurasian cattle (*Bos taurus*) based on microsatellites: clarification for their breed classification. *Animal Genetics* 41, 2: 150-158.
- Tapio I., Tapio M., Li M.-H., Popov R., Ivanova Z., Kantanen J. 2010. Estimation of relatedness among non-pedigreed Yakutian cryo-bank bulls using molecular data: implications for conservation and breed management. *Genetics Selection Evolution* 42: 28.
- Kantanen, J., Edwards, C. J., Bradley, D. G., Viinalass, H., Thessler, S., Ivanova, Z., Kiselyova, T., Činkulov, M., Popov, R., Stojanovic, S., Ammosov, I., Vilkki, J. 2009. Maternal and paternal genealogy of Eurasian taurine cattle (*Bos taurus*). *Heredity* 103, 5: 404-415.
- Li, M.-H., Tapio, I., Vilkki, J., Ivanova, Z., Kiselyova, T., Marzanov, N., Činkulov, M., Stojanović, S., Ammosov, I., Popov, R., Kantanen, J. 2007. Genetic structure of cattle populations (*Bos taurus*) in northern Eurasia and the neighboring Near Eastern regions: implications for breeding strategies and conservation. *Molecular Ecology* 16 (18): 3839-3853.
- Li, M. H., Adamowicz, T., Switonski, M., Ammosov, I., Ivanova, Z., Kiselyova, T., Popov, R., Kantanen, J. 2006. Single nucleotide polymorphisms (SNPs) of three production candidate genes in North Eurasian cattle (*Bos taurus*): the pattern of distribution and a comparison to microsatellites in relation to population differentiation. *Animal Genetics* 37: 390-392.
- Bennewitz, J., Kantanen, J., Tapio, I., Li, M. H., Kalm, E., Vilkki, J., Ammosov, I., Ivanova, Z., Kiselyova, T., Popov, R., Meuwissen, T. H. E. 2006. Estimation of breed contributions to present and future genetic diversity of 44 North Eurasian cattle breeds using core set diversity measures. *Genetics Selection Evolution* 38: 201-220.
- Li, M. H., Nogovitsina, E., Ivanova, Z., Erhardt, G., Vilkki, J., Popov, R., Ammosov, I., Kiselyova, T., Kantanen, J. 2005. Genetic contribution of indigenous Yakutian Cattle to two hybrid populations, revealed by microsatellite variation. *Asian-Australasian Journal of Animal Sciences* 18 (5): 613-619.



edited by  
Leo Granberg, Juha Kantanen and Katriina Soini

# Sakha Ynaga

Cattle of the Yakuts

FINNISH ACADEMY OF SCIENCE AND LETTERS

# Project on northern and Arctic domestic animals

## Arctic Ark. Human-animal adaptations to the Arctic environment: natural and folk selection practices (Arc-Ark)



University of Porto



Yakutian Scientific Research Institute of Agriculture



North-Eastern Federal University in Yakutsk

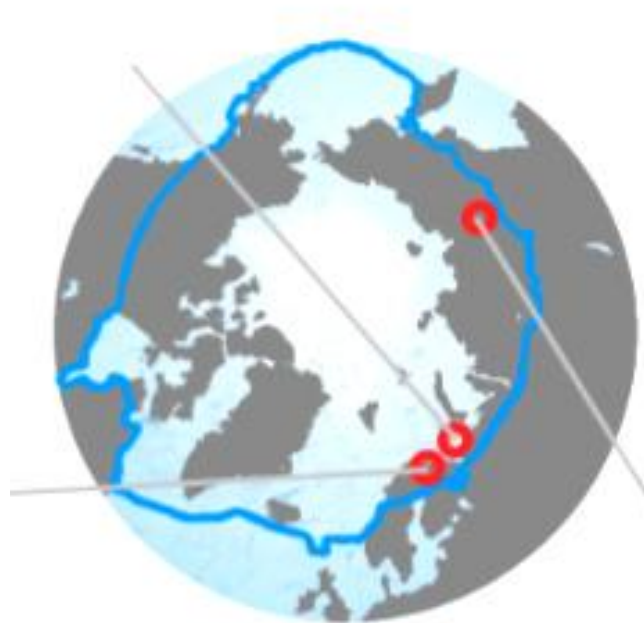
In the Arctic, traditional animal husbandry is based almost exclusively on reindeer (*Rangifer tarandus*) but in Lapland, northern Russia and Siberia also other locally adapted animals, namely cattle (*Bos taurus*) and horse (*Equus caballus*) are used for food production and other societal and cultural needs.

## Arkhangelsk

- Kholmogor cattle
- Mezen horse
- Nenets reindeer

## Finnish Lapland

- Northern Finncattle
- Finnhorse
- Fennoscandian reindeer



## Yakutia

## Eveno-Bytantaj

- Yakutian cattle
- Yakutian horse
- Evenki and Even reindeer

# Arctic phenotype: unique morphoanatomical adaptations to the subarctic climate

Thick coat

Compactly built

Short limbs

# Rumen ecosystem of Eveny reindeer



yakutian\_reindeer\_rumen\_microbes\_2.mp4





# From Nuuk to Yakutsk

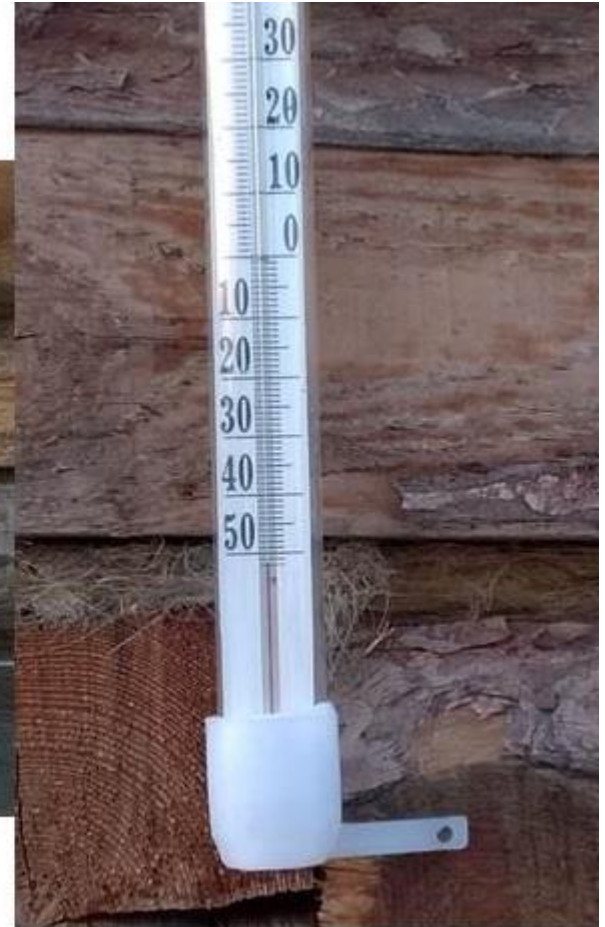








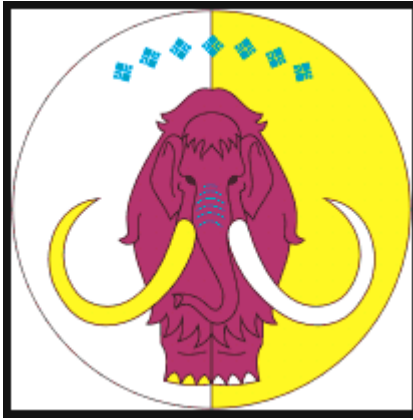
My record -52°C





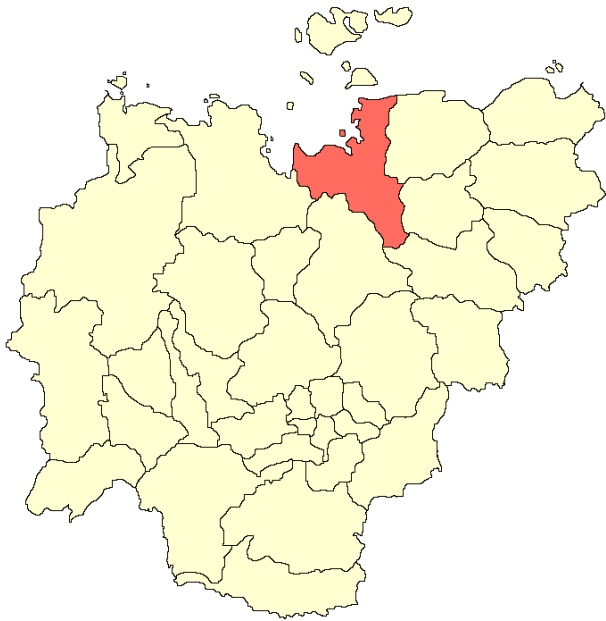


Здесь была зарегистрирована наиболее низкая температура воздуха в северном полушарии -71,2° по Цельсию



**Ust-Yansky District in the northern Yakutia:**

**Deputatski and Kazashje: 300 km from  
Deputatski to Kazashje; took around 12  
hours to drive by a Russian UAZ-jeep**



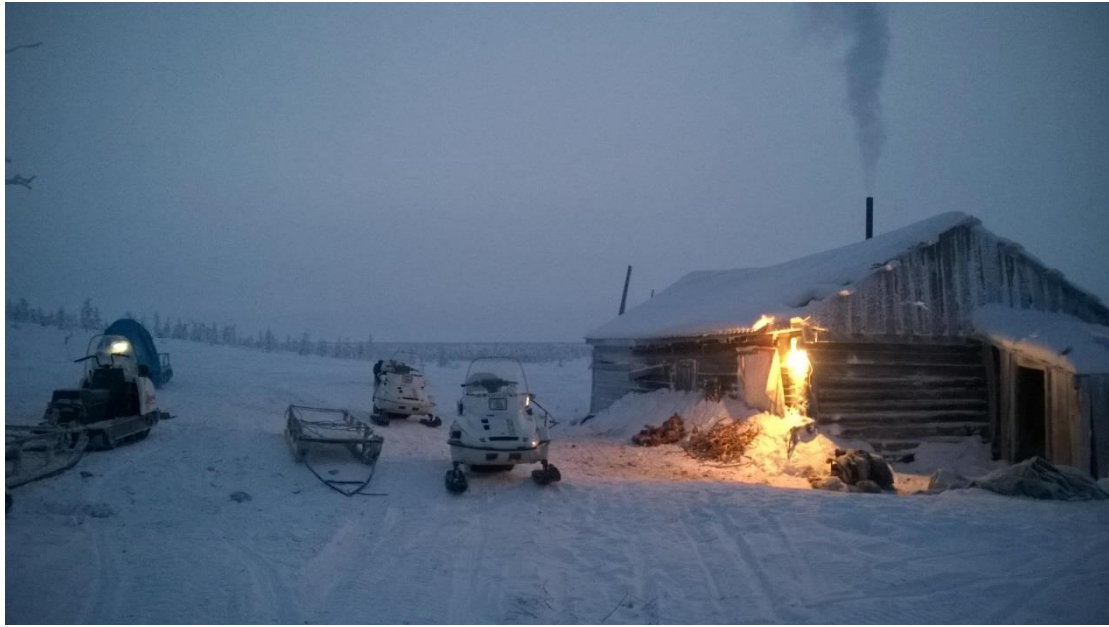


# Kazashje













Thank you!

4.10.2018