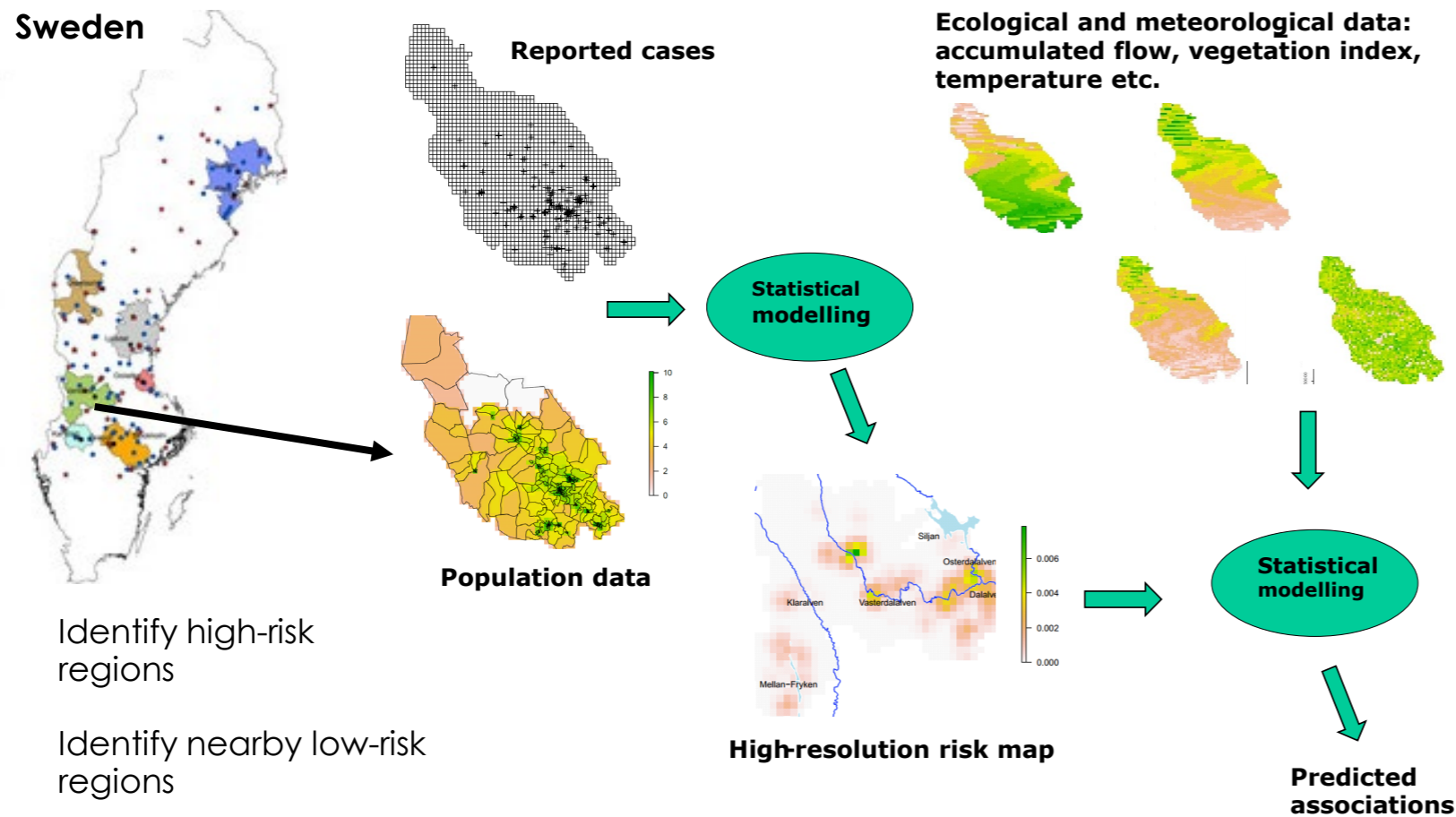


Ecological niches associated with tularemia



Why?

Predict how climate change will affect the identified niches and thereby tularemia abundance.

Process:

- Associations are made for all high-risk region – regional associations.
- Associations observed in several regions.
- Identify ecological niches associated with tularemia risk.
- Study the tularemia outbreak in “the Boden area” 2014-2019 (> 500 human cases).

Figure: Study outline to understand the ecological niches associated with the tularemia risk at a refined scale.