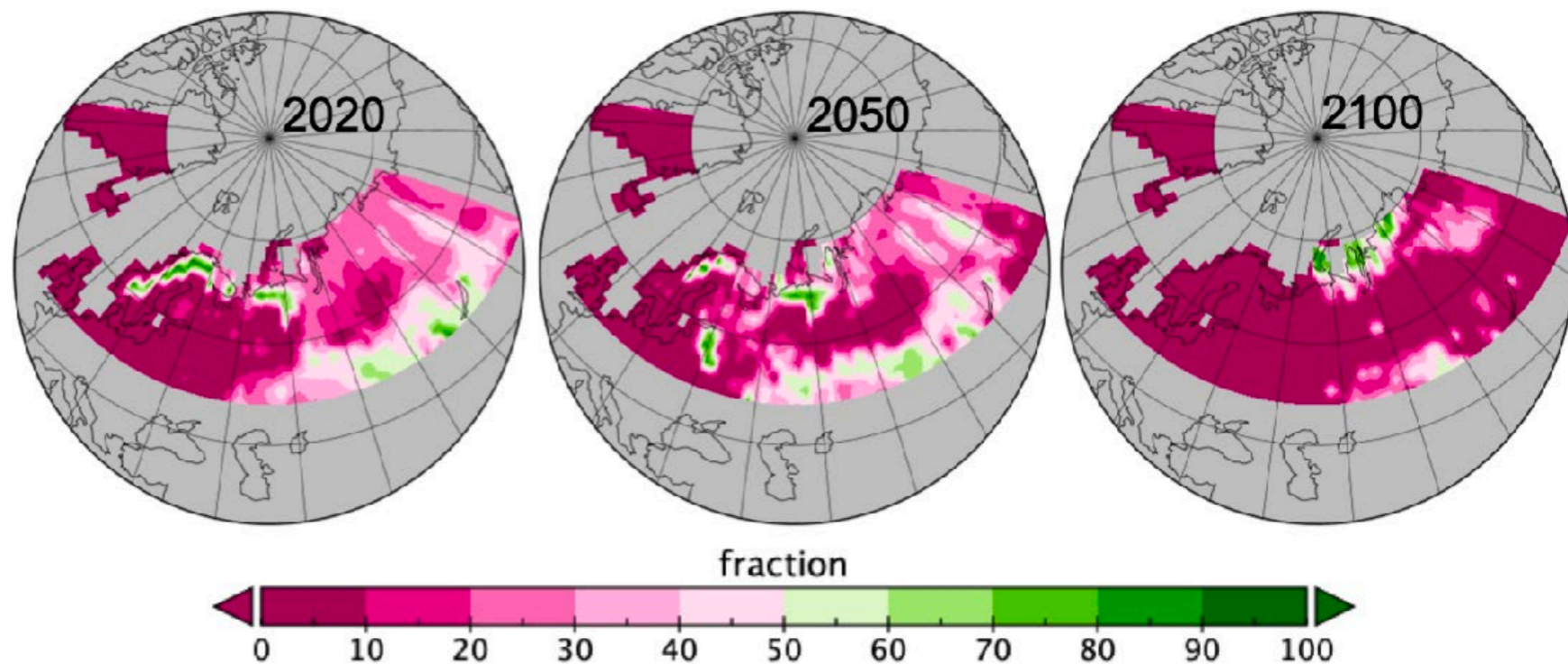
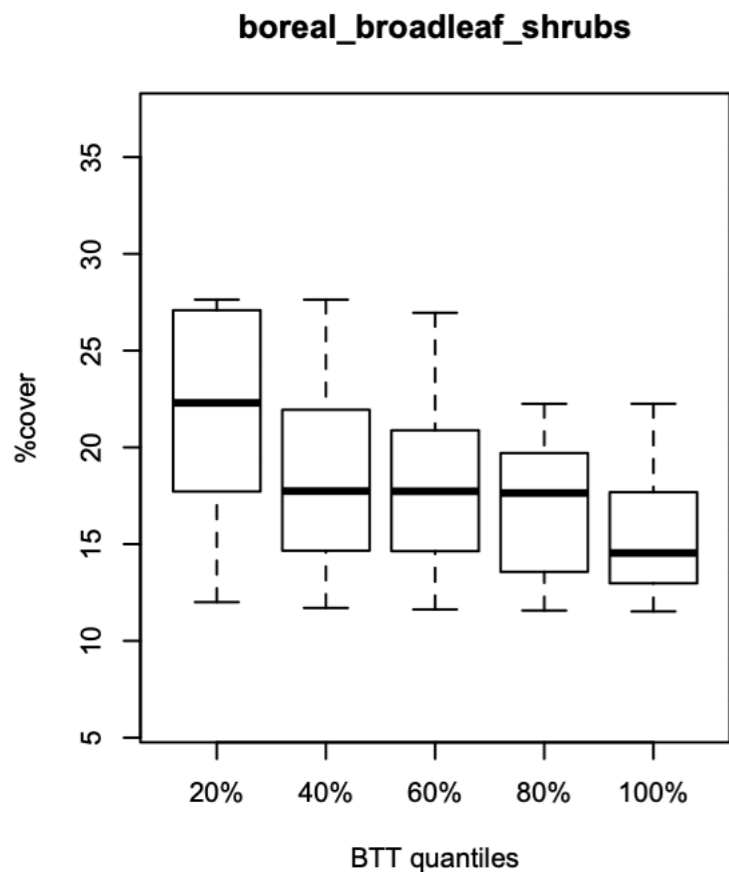


Negative correlation between boreal broadleaf shrubs cover and selected CSI

Boreal broadleaf shrubs will decrease in Fennoscandia but increase in Arctic Russia.



Figures: Boxplot diagram showing cumulated incidences of borreliosis, tick-borne encephalitis and tularemia for the period 1985-2015 in the CLINF research area in relation to the percentage of land covered with boreal broadleaf shrubs (left), and percentage of land covered with boreal broadleaf shrubs modeled for the years 2020, 2050 and 2100.